

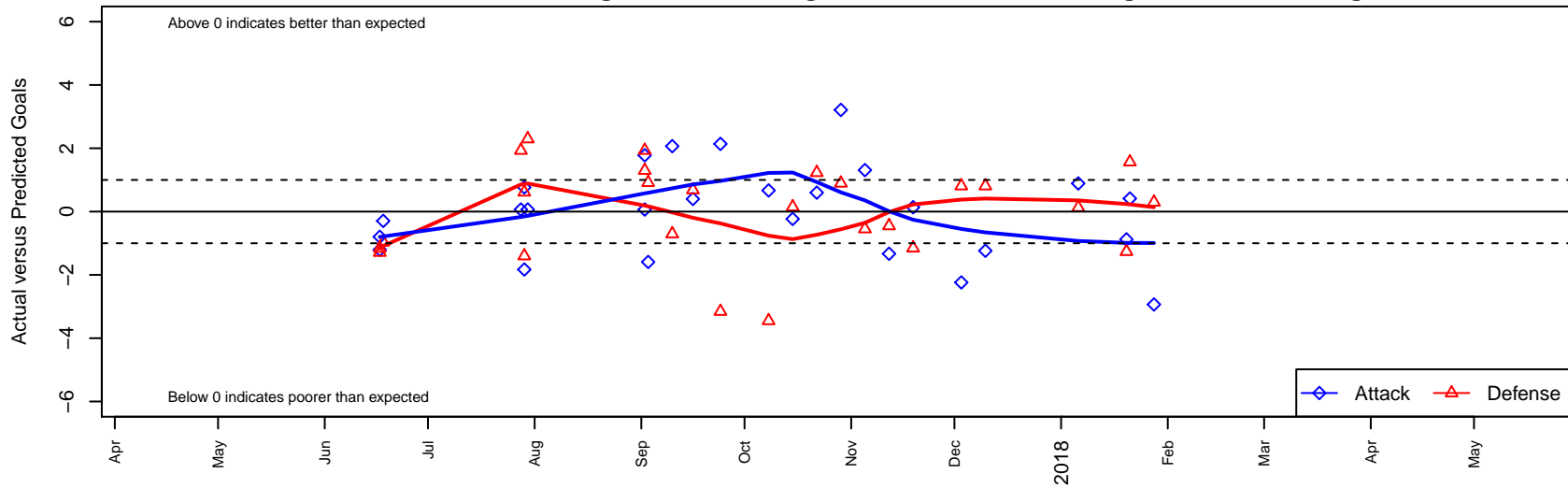
BIFC Blue B03

Bainbridge Island FC
 Bainbridge Island, WA
 B03 total strength=1223
 attack=5.4 defense=3.47
 fall league = NPSL DIVISION 1 (03) U15

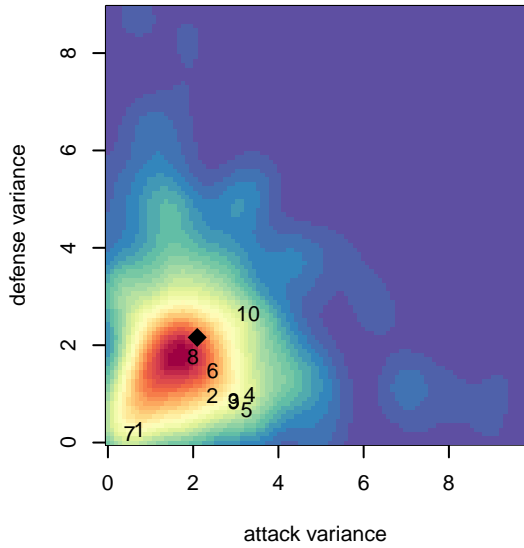
alt names used:
 Bainbridge Island FC B03 Blue
 Bainbridge Island FC B03 Blue
 Bainbridge Island FC B03 Blue
 Bainbridge Island FC B03 Blue
 Bainbridge Island FC B03 Blue

Venues played:
 2017 Skagit Firecracker Div. 1 U15
 2017 Crossfire Select U15 Gold
 2017 Labor Day Cup BU15 Silver
 2017 NPSL DIVISION 1 (03) U15
 2017 Founders Cup B03 Div A

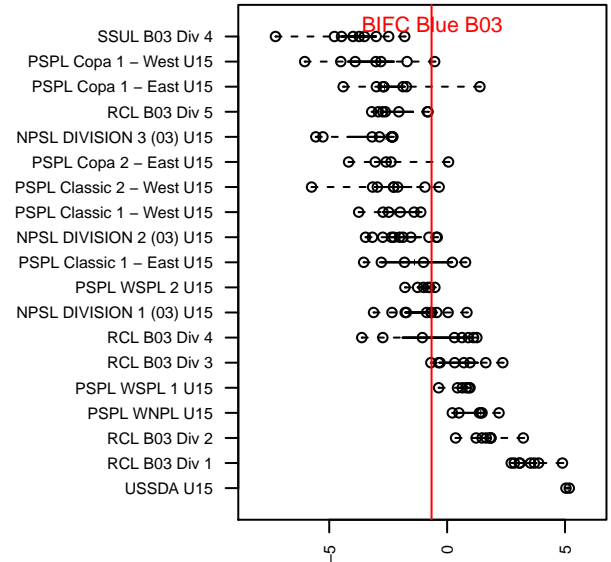
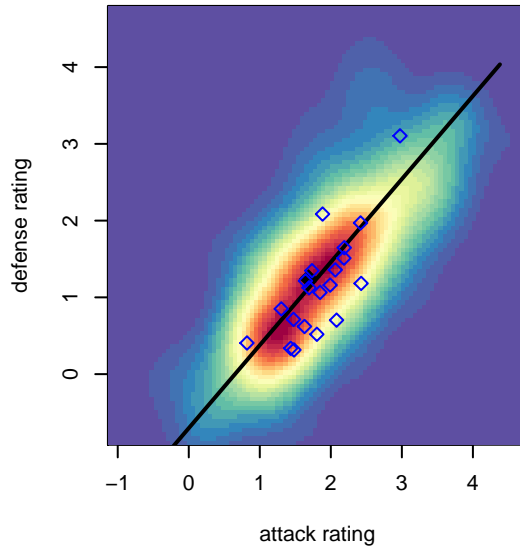
BIFC Blue B03
 Dots are actual minus expected GF (blue circles) and GA (red triangles).
 Blue line is smoothed change in attack strength. Red is smoothed change in defense strength.



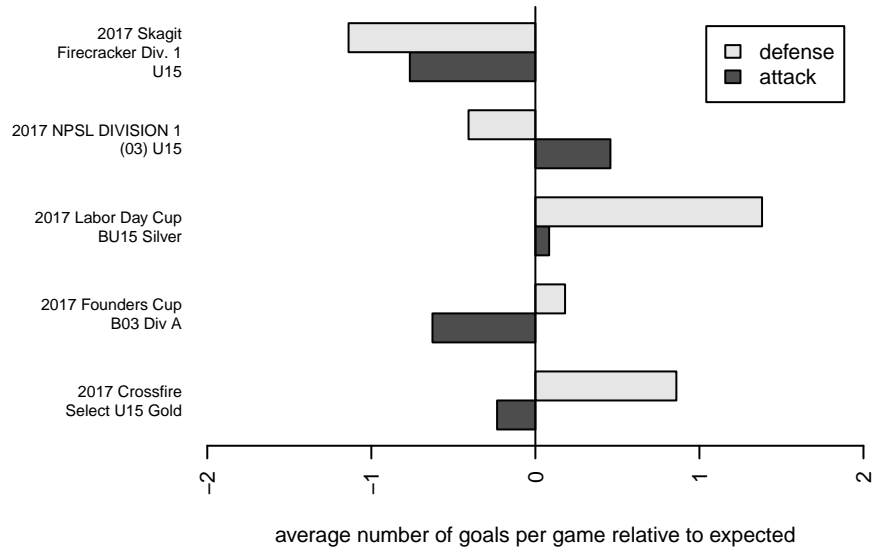
**attack and defense variance (black dot)
relative to other teams
and top 10 in region**



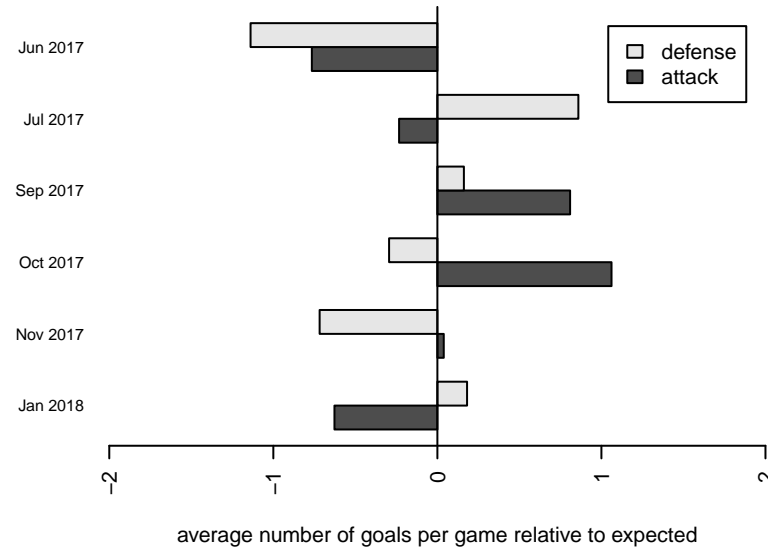
**attack and defense rating
relative to others at age
and all opponents in last 13 months**



Performance relative to 13 month average



Performance relative to 13 month average



date	home		away		venue	pred.home	pred.away
2018-01-28	BIFC Blue B03	0	Crossfire Select Allen B03	2	2017 Founders Cup B03 Div A	2.93	2.29
2018-01-21	BIFC Blue B03	2	Highline Select Blue B03	0	2017 Founders Cup B03 Div A	1.59	1.57
2018-01-20	BIFC Blue B03	3	Seattle United NE Blue B03	3	2017 Founders Cup B03 Div A	3.88	1.74
2018-01-06	NSC Inferno B03	1	BIFC Blue B03	5	2017 Founders Cup B03 Div A	1.13	4.11
2017-12-10	Seattle United S Blue B03	0	BIFC Blue B03	2	2017 NPSL DIVISION 1 (03) U15	0.81	3.24
2017-12-03	BIFC Blue B03	1	Seattle United S Blue B03	0	2017 NPSL DIVISION 1 (03) U15	3.24	0.81
2017-11-19	Seattle United Shoreline Blue B03	3	BIFC Blue B03	1	2017 NPSL DIVISION 1 (03) U15	1.85	0.86
2017-11-12	NSC Green B03	3	BIFC Blue B03	0	2017 NPSL DIVISION 1 (03) U15	2.55	1.33
2017-11-05	BIFC Blue B03	4	Kent United White B03	2	2017 NPSL DIVISION 1 (03) U15	2.69	1.45
2017-10-29	Seattle United W Blue B03	1	BIFC Blue B03	5	2017 NPSL DIVISION 1 (03) U15	1.90	1.79
2017-10-22	Lake Hills Lightning B03	0	BIFC Blue B03	5	2017 NPSL DIVISION 1 (03) U15	1.23	4.40
2017-10-15	BIFC Blue B03	2	STU Evolution Blanco B03	1	2017 NPSL DIVISION 1 (03) U15	2.23	1.15
2017-10-08	BIFC Blue B03	2	NSC Green B03	6	2017 NPSL DIVISION 1 (03) U15	1.33	2.55
2017-09-24	BIFC Blue B03	3	Seattle United Shoreline Blue B03	5	2017 NPSL DIVISION 1 (03) U15	0.86	1.85
2017-09-16	NK Fire B03	1	BIFC Blue B03	2	2017 NPSL DIVISION 1 (03) U15	1.68	1.60
2017-09-10	BIFC Blue B03	5	Crossfire Select Allen B03	3	2017 NPSL DIVISION 1 (03) U15	2.93	2.29
2017-09-03	FC Edmonds Velocity B03	1	BIFC Blue B03	0	2017 Labor Day Cup BU15 Silver	1.91	1.59
2017-09-02	BIFC Blue B03	2	Eastside FC Blue B03	1	2017 Labor Day Cup BU15 Silver	1.93	2.93
2017-09-02	FC Alianza B03	0	BIFC Blue B03	5	2017 Labor Day Cup BU15 Silver	1.30	3.22
2017-07-30	Crossfire Select Allen B03	0	BIFC Blue B03	3	2017 Crossfire Select U15 Gold	2.29	2.93
2017-07-29	BIFC Blue B03	2	LWPFC White Piranhas B03	2	2017 Crossfire Select U15 Gold	1.24	2.61
2017-07-29	BIFC Blue B03	0	Seattle Celtic Green B03	3	2017 Crossfire Select U15 Gold	1.83	1.60
2017-07-28	Eastside FC Blue B03	1	BIFC Blue B03	2	2017 Crossfire Select U15 Gold	2.93	1.93
2017-06-18	BIFC Blue B03	0	NW United Black B03	7	2017 Skagit Firecracker Div. 1 U15	0.29	6.03
2017-06-17	NPSA Titans Navy B03	5	BIFC Blue B03	0	2017 Skagit Firecracker Div. 1 U15	3.84	0.80
2017-06-17	BIFC Blue B03	0	Liga Tlaxtli FC Guerreros B03	4	2017 Skagit Firecracker Div. 1 U15	1.21	2.71